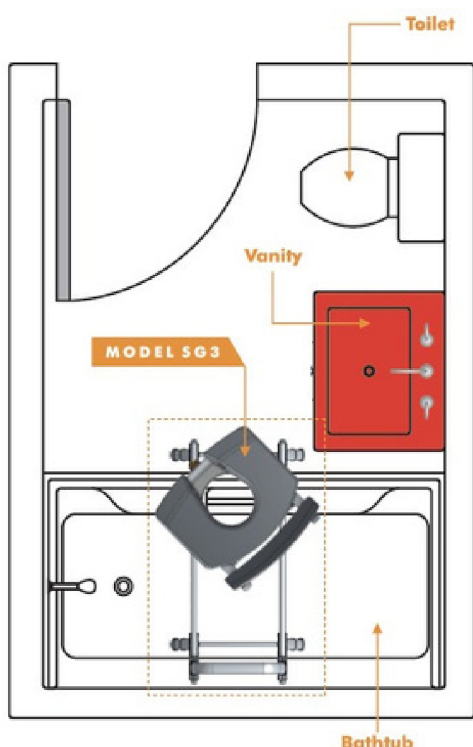


ShowerGlyde

MODEL SG3



Model SG3 Vanity Adjacent



ShowerGlyde Model SG3 is a sliding transfer bench designed to fit in tighter environments or bathrooms with a vanity adjacent to the tub. Shorter rails and a swivel option allow the bench to clear the obstruction/tight space without sacrificing comfort or ease of use. SG3 slides easily in and out of the tub and locks in two points; on the inside and outside of the tub. SG3 can be assembled as a left or right-hand unit. One grab bar installed at the wall side of the rails is included for support in sliding. SG3 is height adjustable allowing clearance of up to a 48.5cm tub height. Optional extension legs are available for taller tubs (up to 63cm high).

Model SG3 also includes a Seat Belt, Grab Bar, and a Commode Seat with 3 options; an open Commode Seat for easy washing, a Splatter Guard, and a Solid Seat Insert to close the commode opening completely.

SWL 150KG

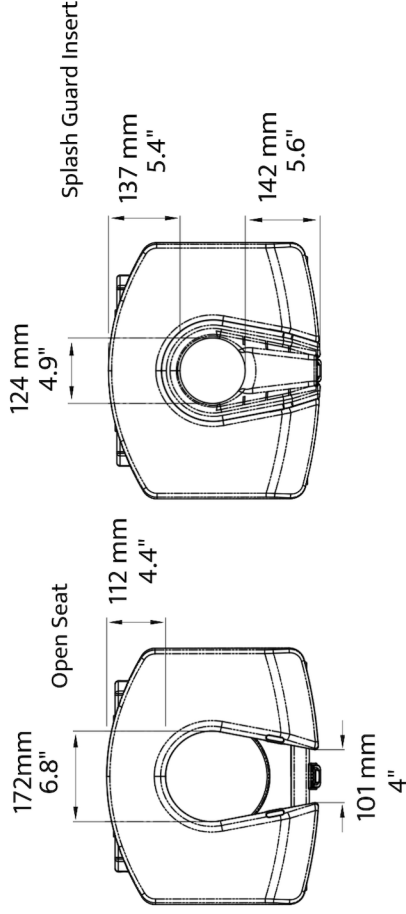
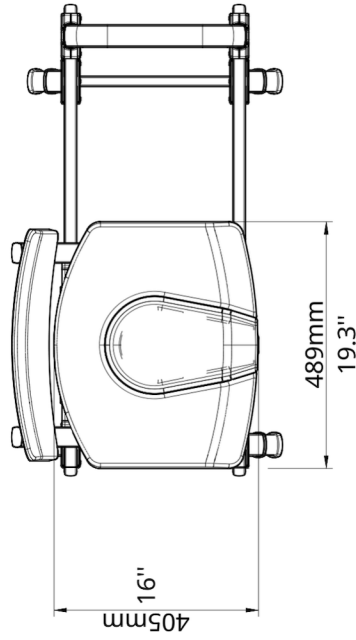
Includes:

- Grab Bar
- Seat Belt
- 49.5 cm tub clearance
- Commode Seat
- Splatter Guard insert
- Solid Seat Insert
- Swivel seat

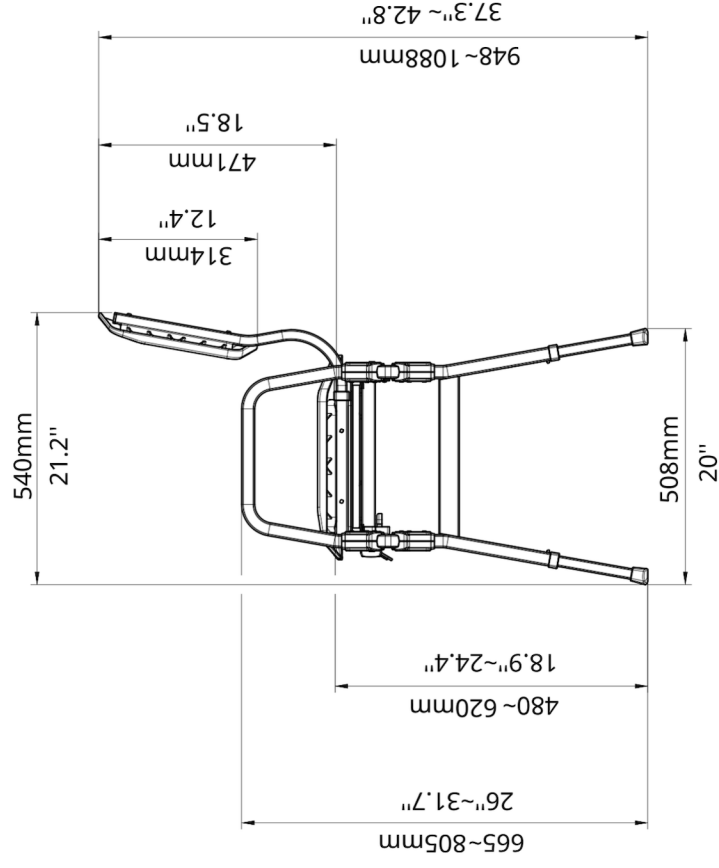
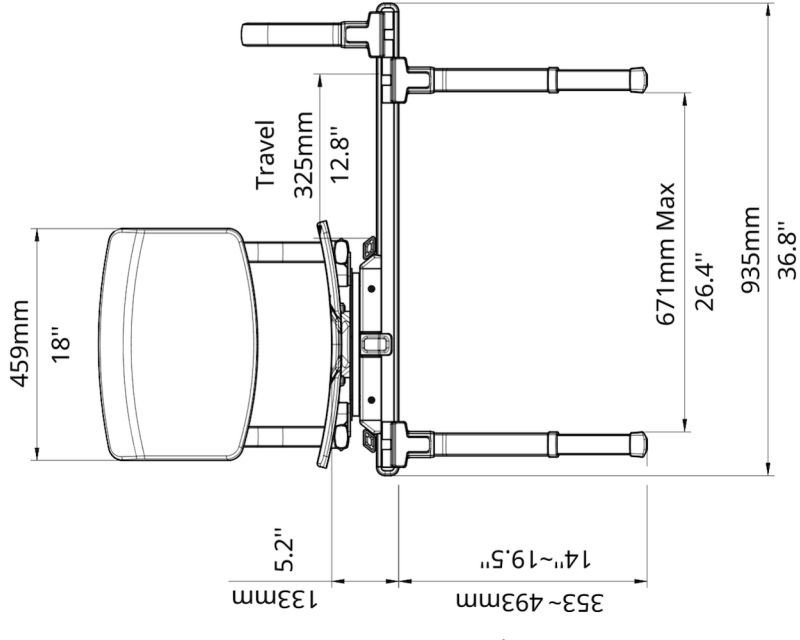
showerbuddy®

ShowerGlyde

MODEL SG3



sb SolutionBased



Tub clearance.

Add additional clearance
with leg extension
accessory: PD000-298

502-640 mm 19.75"~25"

For more information contact
admin@shower-buddy.com
www.shower-buddy.com